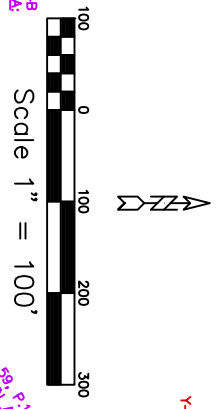
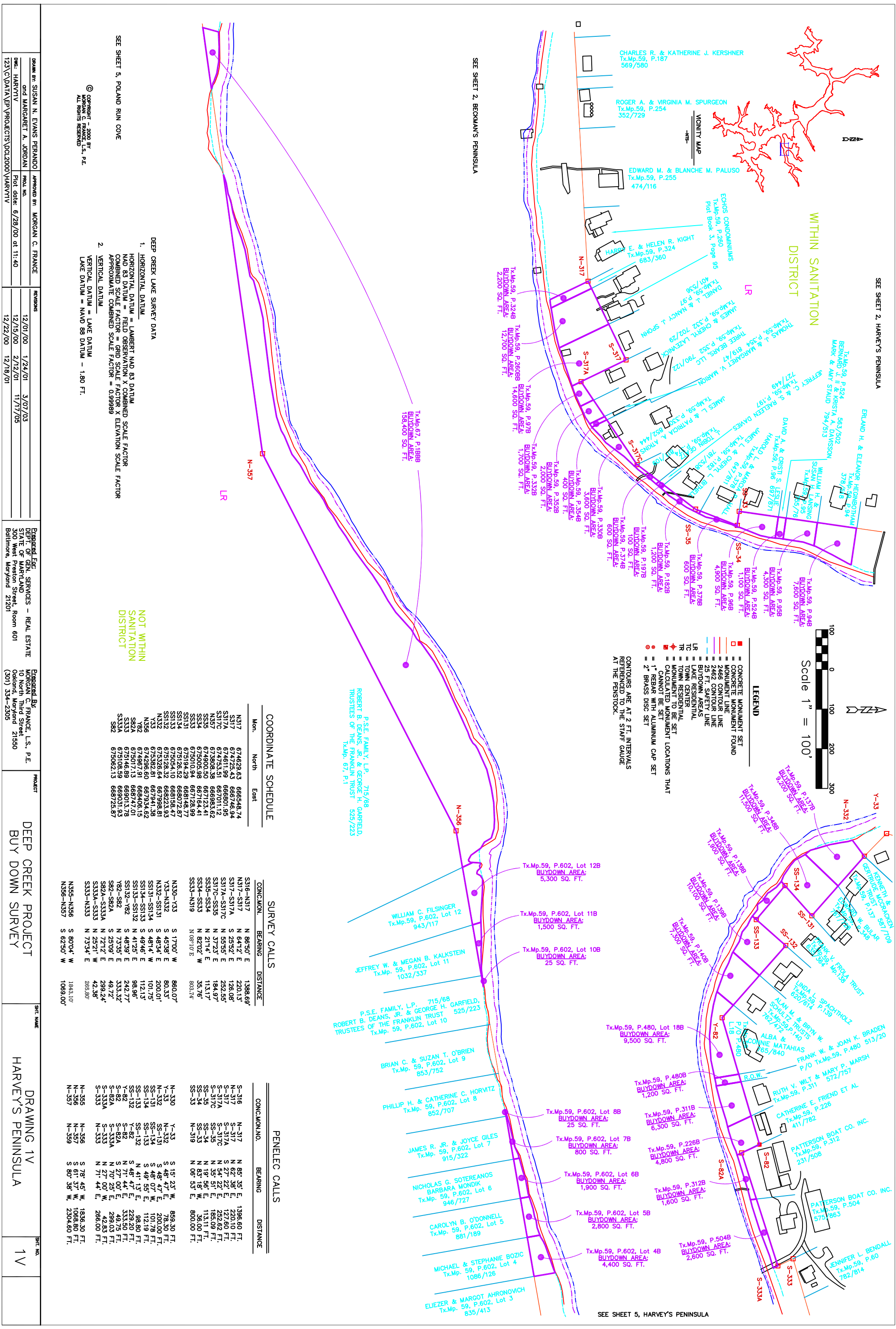


WITHIN SANITATION DISTRICT

SEE SHEET 2, BECKMAN'S PENINSULA

SEE SHEET 5, HARVEY'S PENINSULA



- LEGEND**
- CONCRETE MONUMENT FOUND
 - CONCRETE MONUMENT SET
 - MONUMENT LINE
 - 2466 CONTOUR LINE
 - 2492 CONTOUR LINE
 - 25 FT. SAFETY LINE
 - BUYDOWN AREAS
 - LAKE RESIDENTIAL
 - TOWN CENTER
 - TOWN CENTER
 - MONUMENT TO BE SET
 - CALCULATED MONUMENT LOCATIONS THAT CANNOT BE SET
 - 1" BRASS WITH ALUMINUM CAP SET
 - 2" BRASS DISC SET

CONTOURS ARE AT 2 FT. INTERVALS REFERENCED TO THE STAFF GAUGE AT THE PENSTOCK.

COORDINATE SCHEDULE

Mon.	North	East
N317	674829.63	666548.74
S317	674725.43	666746.94
S317A	674611.99	666801.95
S317C	674753.51	667011.12
N357	673808.38	666983.62
SS35	674900.50	667123.41
SS34	675005.98	667164.41
SS33	675010.94	667128.99
SS31	675194.29	668148.77
SS14	675126.32	668072.67
SS13	675126.32	668072.67
SS12	675126.32	668072.67
N332	675326.64	667998.81
N356	674596.60	667941.38
Y82	674967.91	668406.15
S82A	675017.13	668747.01
S333	675146.89	669031.78
S332A	675108.59	669031.93
S82	675062.13	668725.87

SURVEY CALLS

CONC./MON.	BEARING	DISTANCE
S316-N317	N 86°50' E	1388.69'
N317-S317	N 64°12' E	220.13'
S317-S317A	S 28°52' E	126.08'
S317A-S317C	N 58°55' E	252.95'
S317C-S335	N 21°23' E	184.97'
SS34-SS33	N 21°14' E	113.17'
SS33-N319	N 82°02' W	35.76'
	N 08°10' E	803.74'
N330-Y33	S 17°00' W	860.07'
Y33-N332	S 48°33' E	80.33'
N332-SS131	S 48°34' E	200.01'
SS131-SS134	S 48°14' W	101.75'
SS134-SS133	S 49°14' W	112.13'
SS133-SS132	N 41°25' E	98.96'
SS132-Y82	S 48°33' E	242.77'
Y82-S82A	N 73°35' E	333.32'
S82A-S333A	S 28°09' E	49.72'
S333A-S333	N 27°12' W	299.24'
S333-N333	N 73°34' E	42.38'
N335-N336	S 80°04' W	285.80'
N336-N357	S 62°50' W	1069.00'

PENELEC CALLS

CONC./MON./NO.	BEARING	DISTANCE
S-316	N 85°35' E	1366.60 FT.
S-317	N 62°38' E	220.10 FT.
S-317A	S 27°22' E	127.60 FT.
S-317C	N 54°22' E	252.82 FT.
SS-35	N 35°51' E	185.09 FT.
SS-34	N 19°56' E	113.11 FT.
SS-33	N 83°18' W	36.00 FT.
N-319	N 06°53' E	800.00 FT.
Y-33	S 15°23' W	860.07 FT.
N-332	S 48°47' E	78.30 FT.
SS-131	S 48°07' W	200.00 FT.
SS-134	S 49°55' E	101.78 FT.
SS-133	N 41°13' E	98.80 FT.
SS-132	N 41°13' E	98.80 FT.
Y-82	S 48°47' E	229.20 FT.
S-82A	N 71°44' E	333.50 FT.
S-333A	S 27°00' E	49.75 FT.
S-333	N 27°28' E	299.03 FT.
S-333	N 71°44' E	42.83 FT.
N-335	S 78°45' W	1836.30 FT.
N-356	S 61°37' W	1068.60 FT.
N-357	S 80°38' W	2304.60 FT.
N-359		

© Copyright - 2000 BY
MORGAN C. FRANCE, L.S., P.E.
ALL RIGHTS RESERVED

DEEP CREEK LAKE SURVEY DATA

1. HORIZONTAL DATUM
HORIZONTAL DATUM = LAMBERT NAD 83 DATUM
NAO 83 DATUM = FIELD OBSERVATION X COMBINED SCALE FACTOR
COMBINED SCALE FACTOR = GRID SCALE FACTOR X ELEVATION SCALE FACTOR
APPROXIMATE COMBINED SCALE FACTOR = 0.999889

2. VERTICAL DATUM
VERTICAL DATUM = LAKE DATUM
LAKE DATUM = NAVD 88 DATUM - 1.80 FT.

NOT WITHIN SANITATION DISTRICT

APPROVED BY:	DATE:	REVISIONS:	DESIGNED BY:	PROJECT:	SHEET NAME:
SUSAN N. EVANS PERANNO	12/01/00	1/24/01	MORGAN C. FRANCE, L.S., P.E.	DEEP CREEK PROJECT BUY DOWN SURVEY	DRAWING 1V
MARGARET A. JORDAN	12/15/00	2/12/01	STATE OF MARYLAND		
HARVEY	6/28/00	11/17/05	300 West Preston Street, Room 601		
	12/22/00	12/18/01	Baltimore, Maryland 21201		
			10 North Third Street		
			Columbia, Maryland 21550		
			(301) 334-2305		
					SHEET NO. 1V

DRAWN BY: SUSAN N. EVANS PERANNO
CHECKED BY: MARGARET A. JORDAN
DATE: 6/28/00 at 11:40
PROJECT NO.: 123\DATA\EPV\PROJECTS\DCJ2000\HARVYV